

1000-668

# Westgate Education Development Center

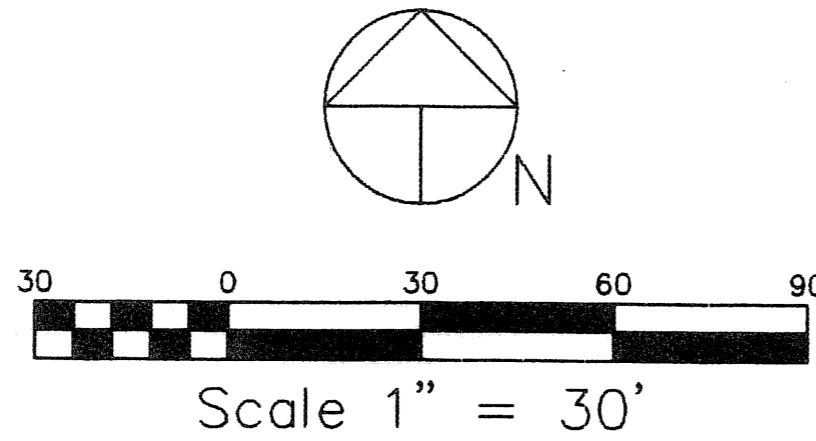
18

### GPS COORDINATE NOTES:

- A. COORDINATES SHOWN ARE GRID
- B. DATUM - NAD 83, 1990 ADJUSTMENT
- C. ZONE - FLORIDA EAST
- D. LINEAR UNIT - US SURVEY FOOT
- E. COORDINATE SYSTEM 1983 STATE PLANE
- F. TRANSVERSE MERCATOR PROJECTION
- G. ROTATION EQUATION:  
NORTH 89°58'44" EAST (PLAT BEARING)  
SOUTH 88°52'56" EAST (GRID BEARING)  
= 01°08'20" CLOCKWISE BEARING ROTATION (PLAT TO GRID)
- H. SCALE FACTOR: 1.00004 (PLAT TO GRID)
- I. THE GEODETIC COORDINATES SHOWN HEREON ARE BASED ON A GPS OBSERVATIONS BY DAVID NARRO, PSM, OF SURVEYING SERVICES, INC., RELATIVE TO THE NEAREST CONTROL POINT WITHIN PALM BEACH COUNTY'S GEODETIC CONTROL NETWORK ON THE NORTH AMERICAN DATUM OF 1983 AS READJUSTED BY PALM BEACH COUNTY, FLORIDA IN 1997.
- J. THE FOLLOWING STATIONS WERE CONSTRAINED ON THE ABOVE REFERENCED OBSERVATIONS:  
"OKEE SSP" N 863864.946, E 936689.812  
"BLACKMORE" N 853000.960, E 951065.521

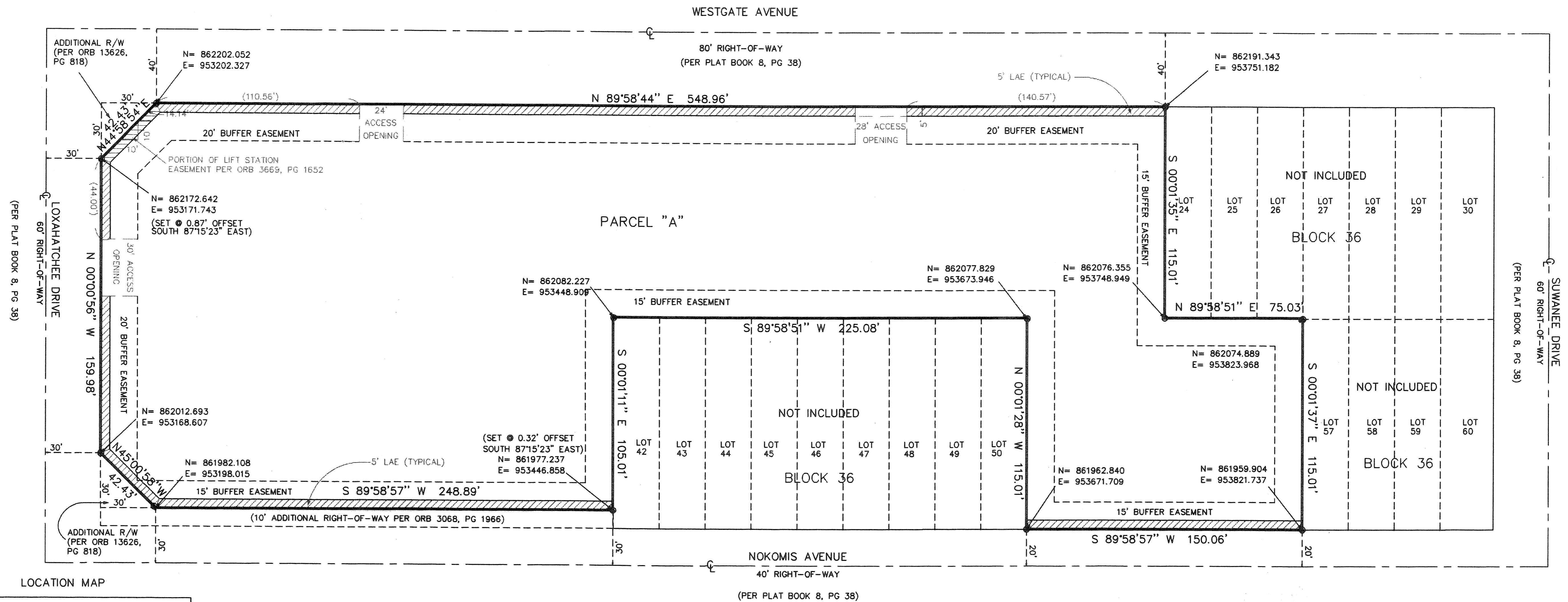
A REPLAT OF PORTIONS LOTS 1, 2, AND 31 THRU 41, AND ALL OF LOTS 3 THRU 23 AND 51 THRU 56 OF BLOCK 36  
OF THE PLAT "WEST GATE ESTATES (NORTHERN SECTION)"  
AS RECORDED IN PLAT BOOK 8, PAGE 38  
LYING IN SECTION 30, TOWNSHIP 43 SOUTH, RANGE 43 EAST  
PALM BEACH COUNTY, FLORIDA

APRIL 2006  
SHEET 2 OF 2

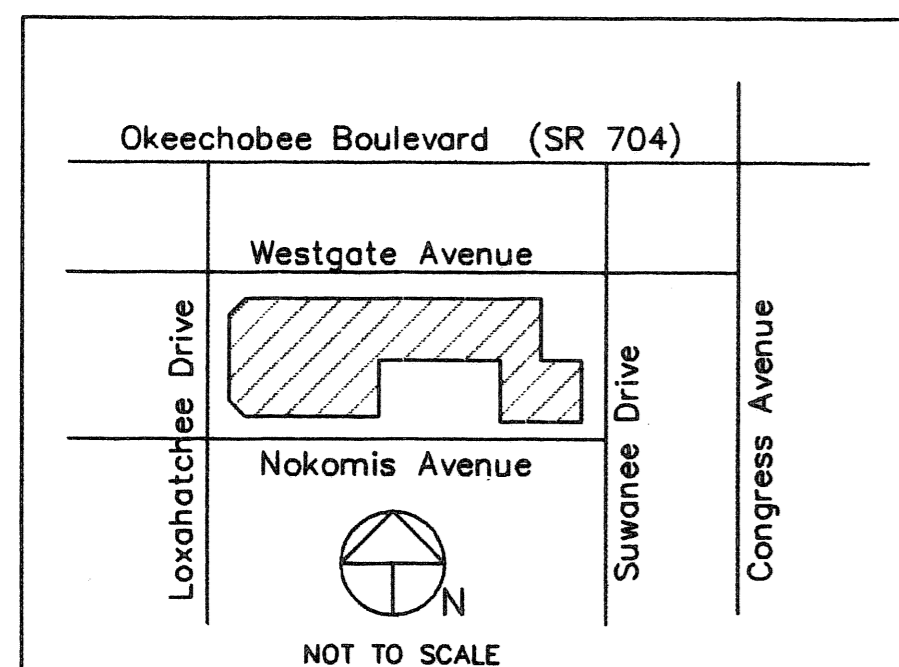


### LEGEND:

- 1)  $\odot$  DENOTES PERMANENT REFERENCE MONUMENT SET, PSM #4133.
- 2) BEARING BASIS: NORTH 89°58'44" EAST, ALONG THE CENTERLINE OF WEST GATE AVENUE, ASSUMED FOR CONVENIENCE; ORIGINAL PLAT CONTAINS MINIMAL ANGULAR DATA.
- 3) ABBREVIATIONS:  
"ORB" DENOTES OFFICIAL RECORDS BOOK (PALM BEACH COUNTY)  
"PG" DENOTES PAGE  
"R/W" DENOTES RIGHT-OF-WAY  
"LAE" DENOTES LIMITED ACCESS EASEMENT



LOCATION MAP



This instrument was prepared by Robert P. Blaszyk, PSM, in the offices of RPB Consulting, Inc.

**RPB Consulting, Inc.**  
Land Surveying and Mapping

7741 North Military Trail, Woodbine Commons, Suite 1, Palm Beach Gardens, Florida 33410  
Phone (561) 841-7466 Fax (561) 841-3919 Email: rpbconsultinginc@earthlink.net

### NOTICE:

THIS PLAT AS RECORDED IN ITS GRAPHIC FORM, IS THE OFFICIAL DEPICTION OF THE SUBDIVIDED LANDS DESCRIBED HEREIN AND WILL IN NO CIRCUMSTANCES BE SUPPLANTED IN AUTHORITY BY ANY OTHER GRAPHIC OR DIGITAL FORM OF THE PLAT. THERE MAY BE ADDITIONAL RESTRICTIONS THAT ARE NOT RECORDED ON THIS PLAT THAT MAY BE FOUND IN THE PUBLIC RECORDS OF THIS COUNTY.

SUBMITTER: Westgate Education Development Center  
 BOOK: 108  
 PAGE: 18  
 RECORDING: 155 B  
 QUANTITY: 16  
 DATE: 9/12/06  
 FEE: \$2,400.00